

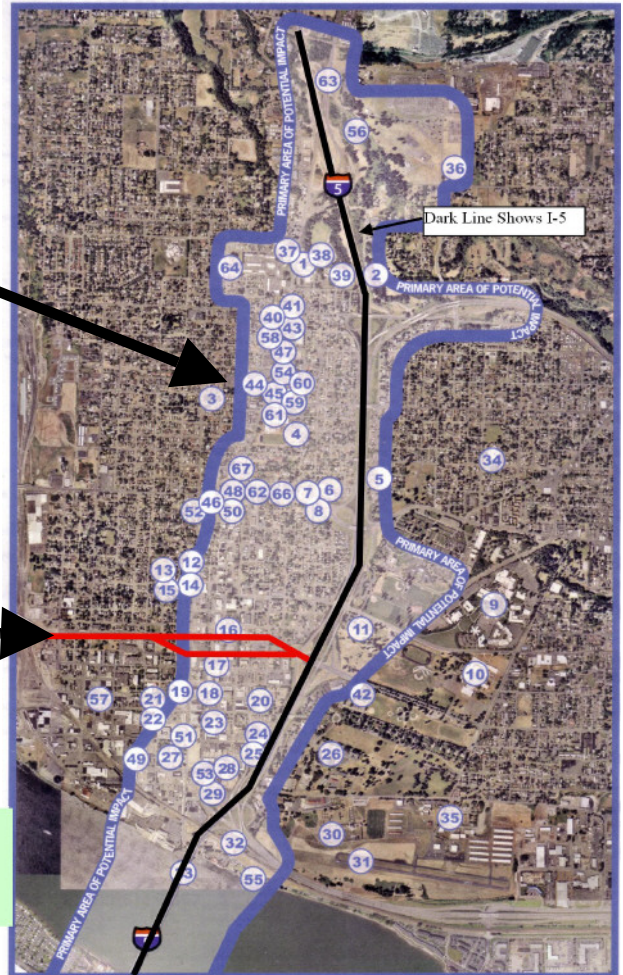


# New Third Bridge has FAR less impact

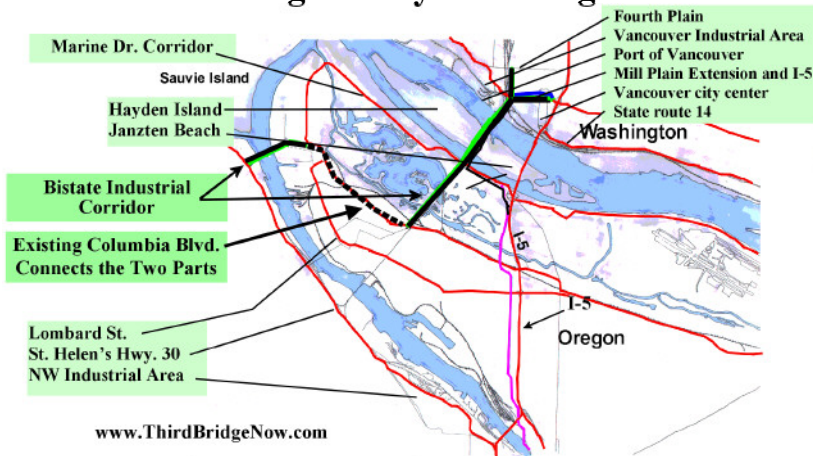
Blue outline shows “Primary Area of Potential Impact” for Columbia River Crossing proposed project:

- Historic Ft, Vancouver
- A hundred or more homes
- Jantzen Beach
- High bridge “lands” far away from river
- Very Expensive, costs \$2-6 Billion

Potential impact of new Third Bridge Proposal is outlined



The new Third Bridge at the railroad crossing is away from neighborhoods:



Contact Senator Murray and tell her that you want the new Third Bridge studied.

The Marshall House  
 1323 Officer's Row  
 Vancouver, Washington 98661  
 Phone: (360) 696-7797  
 Fax: (360) 696-7798

www.ThirdBridgeNow.com

FOLD HERE FOR MAILING - see other side

ETA  
 PMB#390  
 8316 N. Lombard  
 St. Johns, OR. 97203

Place  
 Stamp  
 Here

ETA  
 PMB#390  
 8316 N. Lombard  
 St. Johns, OR. 97203